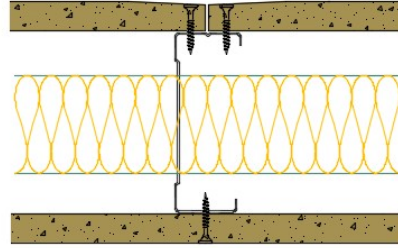


## 92-S-63(50) - SPEEDLINE System Data Sheet - Version V1 (24-10-23)

SPEEDLINE 92mm 'C' Stud Partition @600mm Ctrs,  
with Siniat GTEC 15mm Universal/Megadeco  
Board each side, 50mm APR



### System Performance Breakdown

Fire Resistance:

BS476 Part 22:1987:

Test Ref & Date or Applied Ref & Report:

Max Height:

Thickness:

Duty Grade: BS 5234: Part 2:1992:

Sound Insulation:

**60/60 Minutes** (Integrity/Insulation).

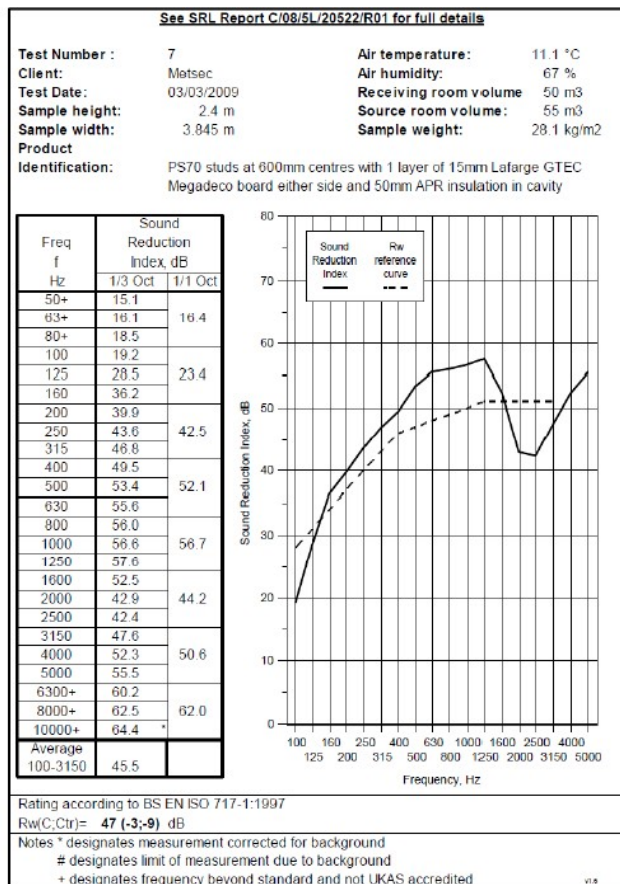
**BTC 17444F - BRE Report P102396-1011C**

**Refer to Speedline Specification Clause**

**124 mm.** (At Base Track, Excluding Finishes)

**Severe - Annexes A-F**

**47  $R_w$ dB**, Date Tested or Assessed Against - 70-S-63(50)



TESTED AT ONE OF THE UKAS  
ACCREDITED LABORATORIES  
BELOW

B.T.C (H-Ref on Graph)	
B.R.E	
AIRO	
S.R.L	

SPEEDLINE Drywall Systems, Adsetts House, 16 Europa View, Sheffield Business Park, Sheffield, S9 1XH.

Tel: 0114 231 8030.

Email: [enquiries@speedlinedrywall.co.uk](mailto:enquiries@speedlinedrywall.co.uk)

(As per the requirements set out in ISO/IEC 17025:2017 regarding test data the results stated have been carried out by voestalpine Metsec plc as part of the contract to supply Speedline Metal Sections to SIG Plc)